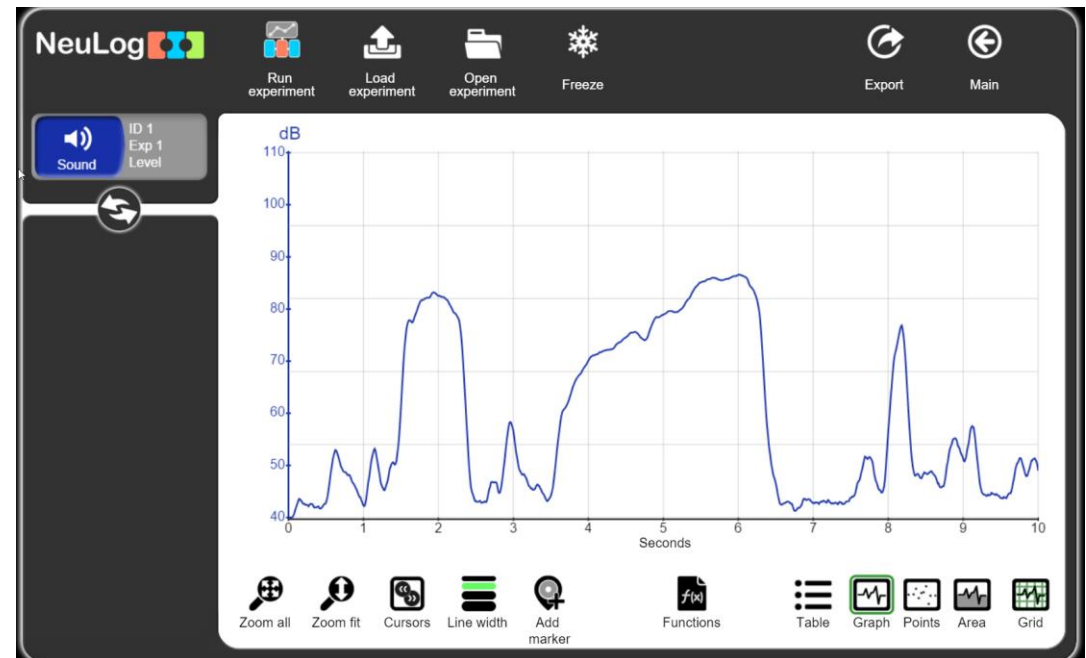
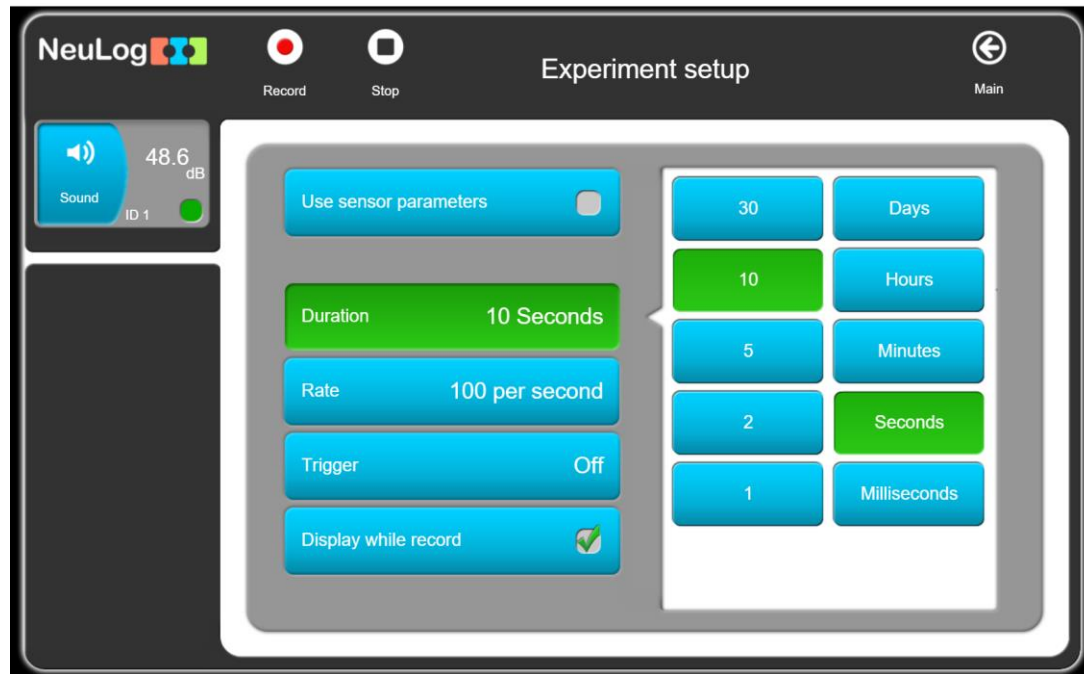


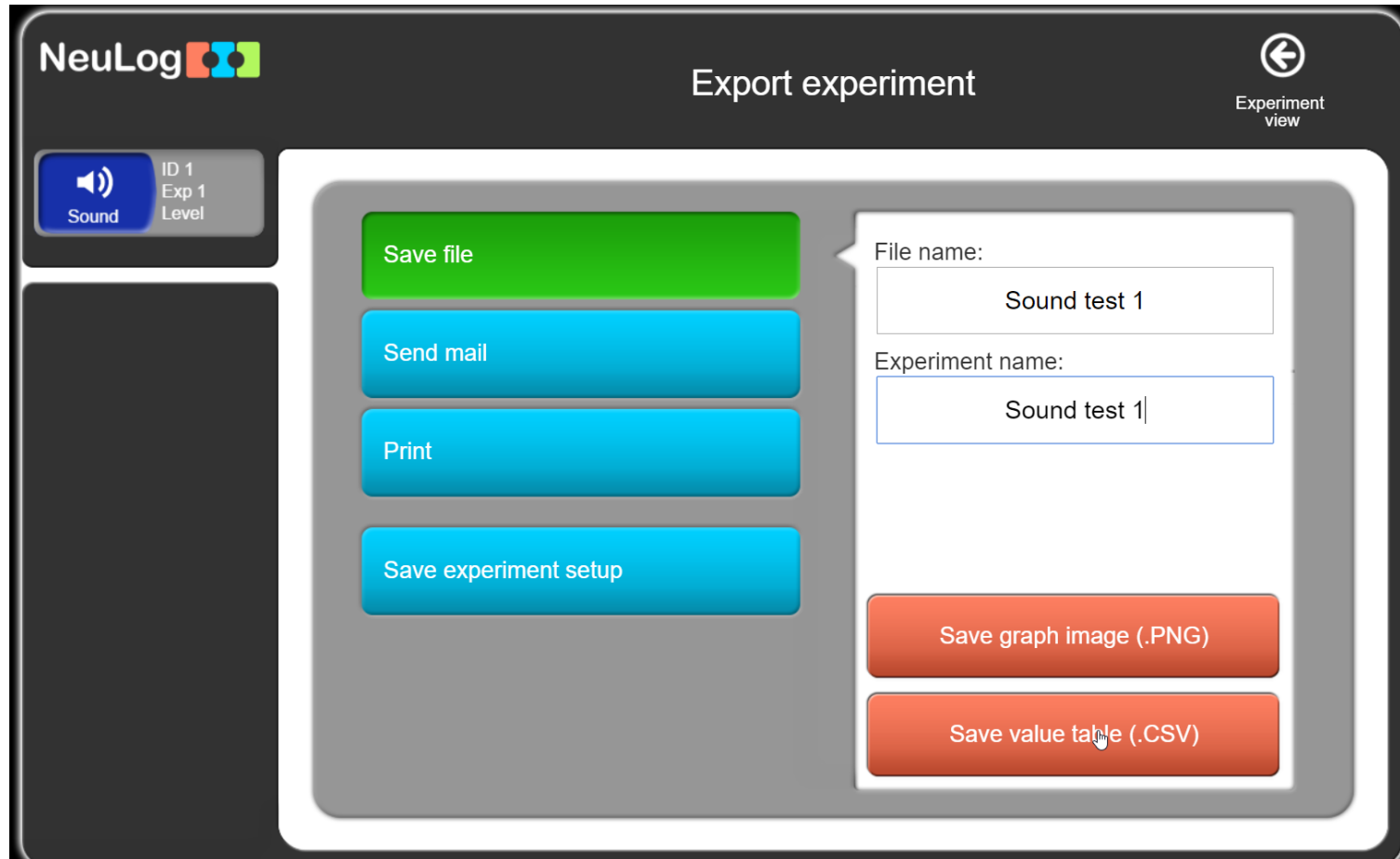
Opened NeuLog software, I used a sound sensor to demonstrate.



Ran a 10 second experiment

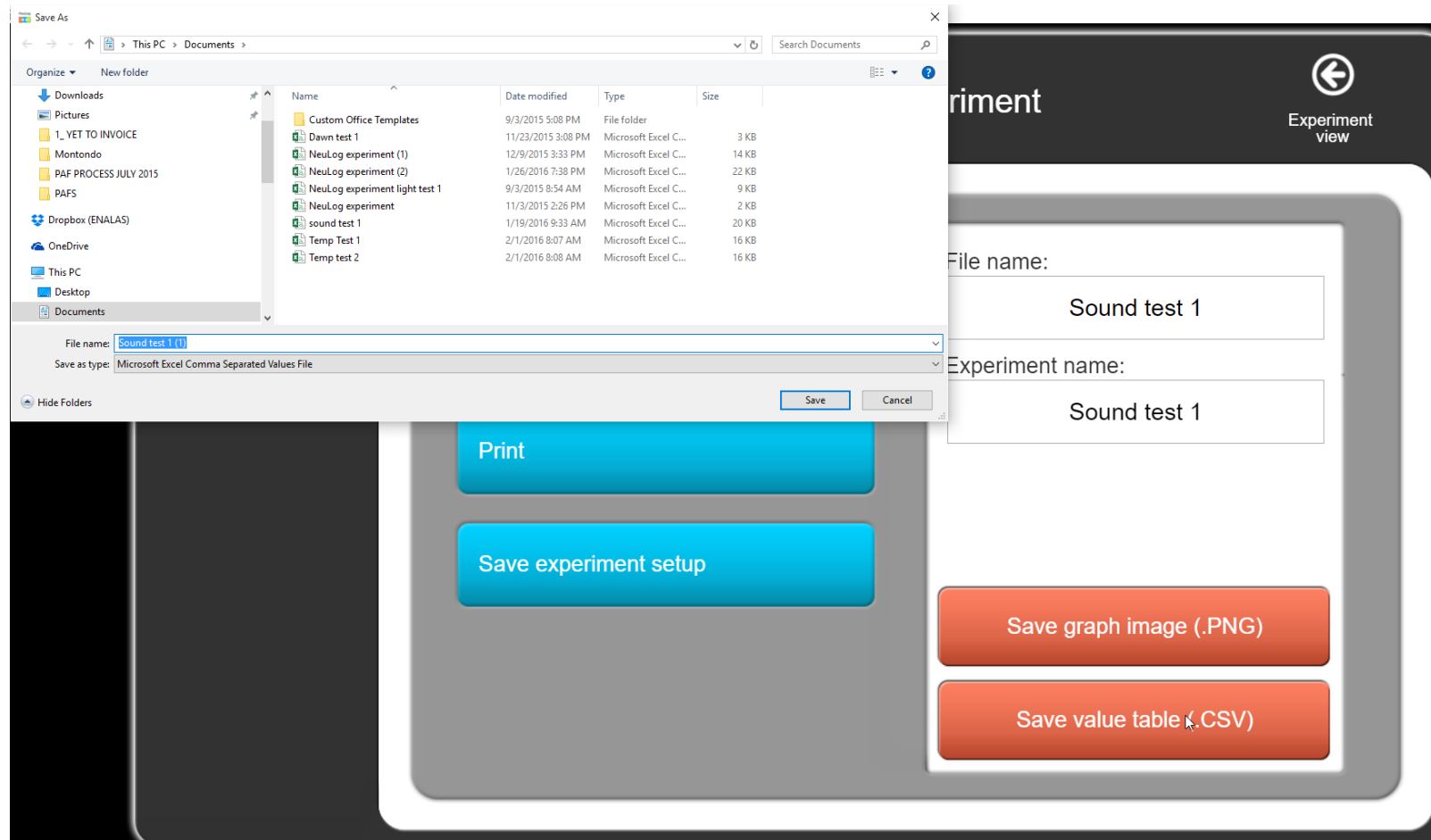


Clicked Export, named file...

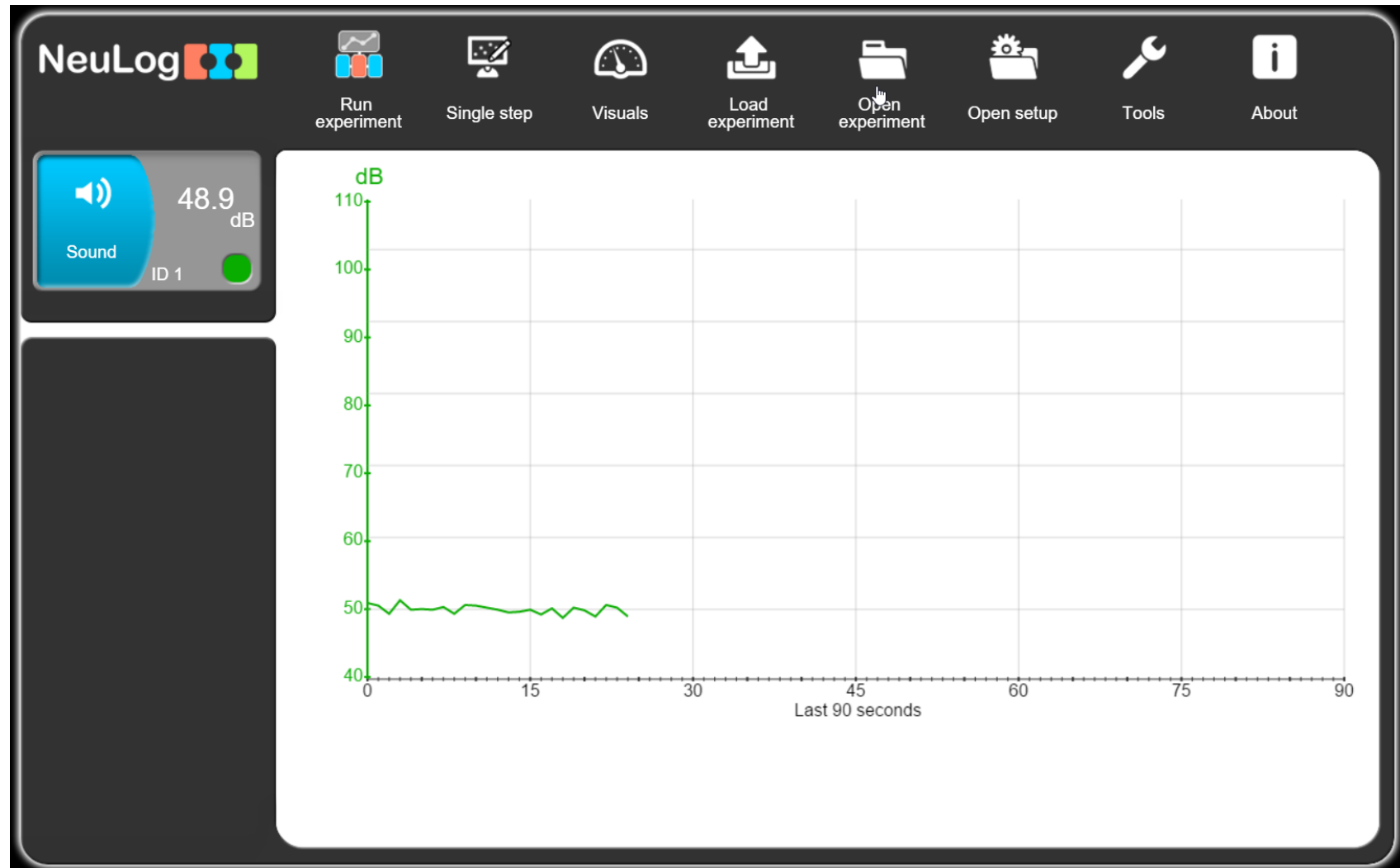


Save the experiment as a CSV, it went into my documents folder.

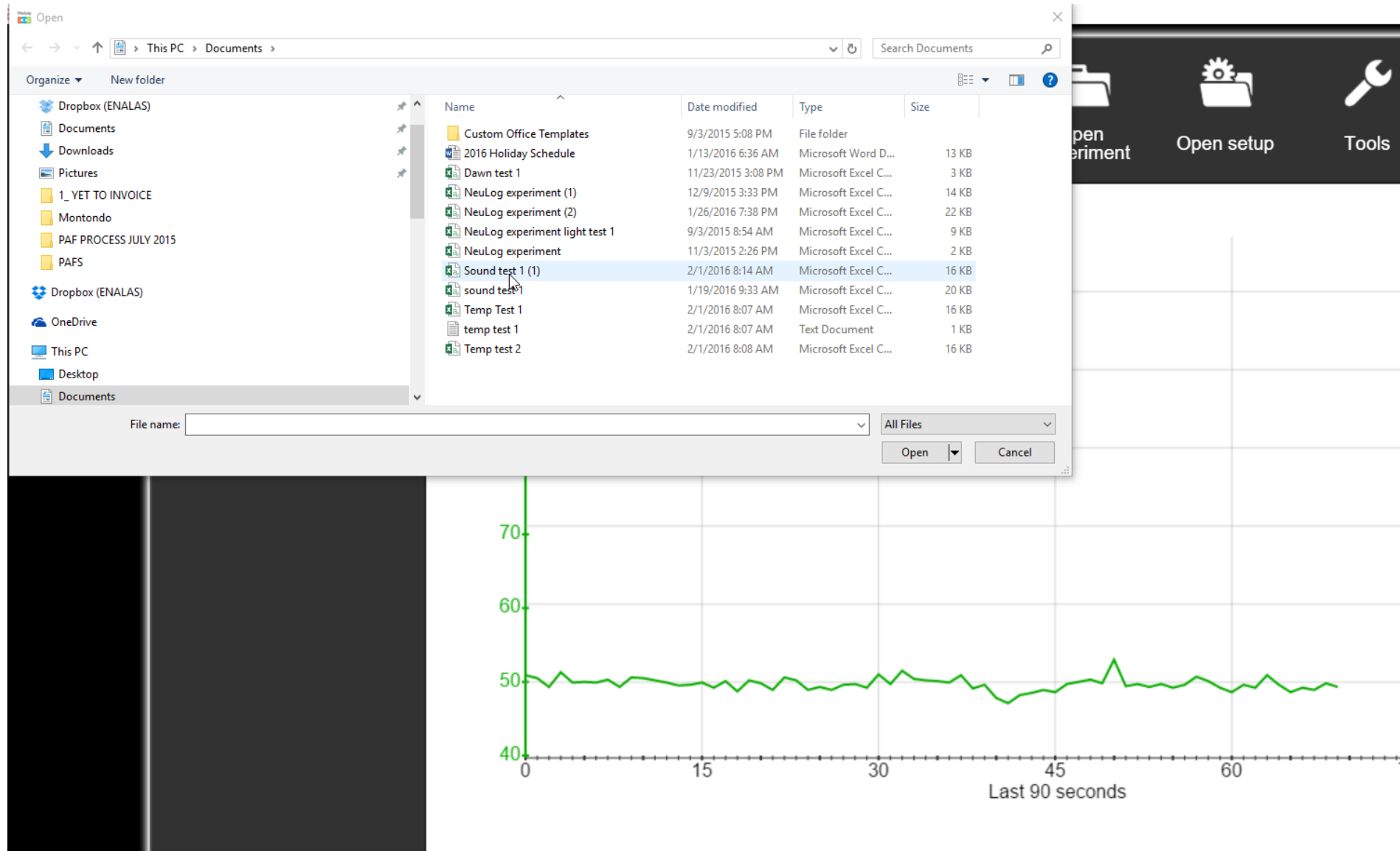
I then closed NeuLog, disconnected USB and Sensor and restarted software.



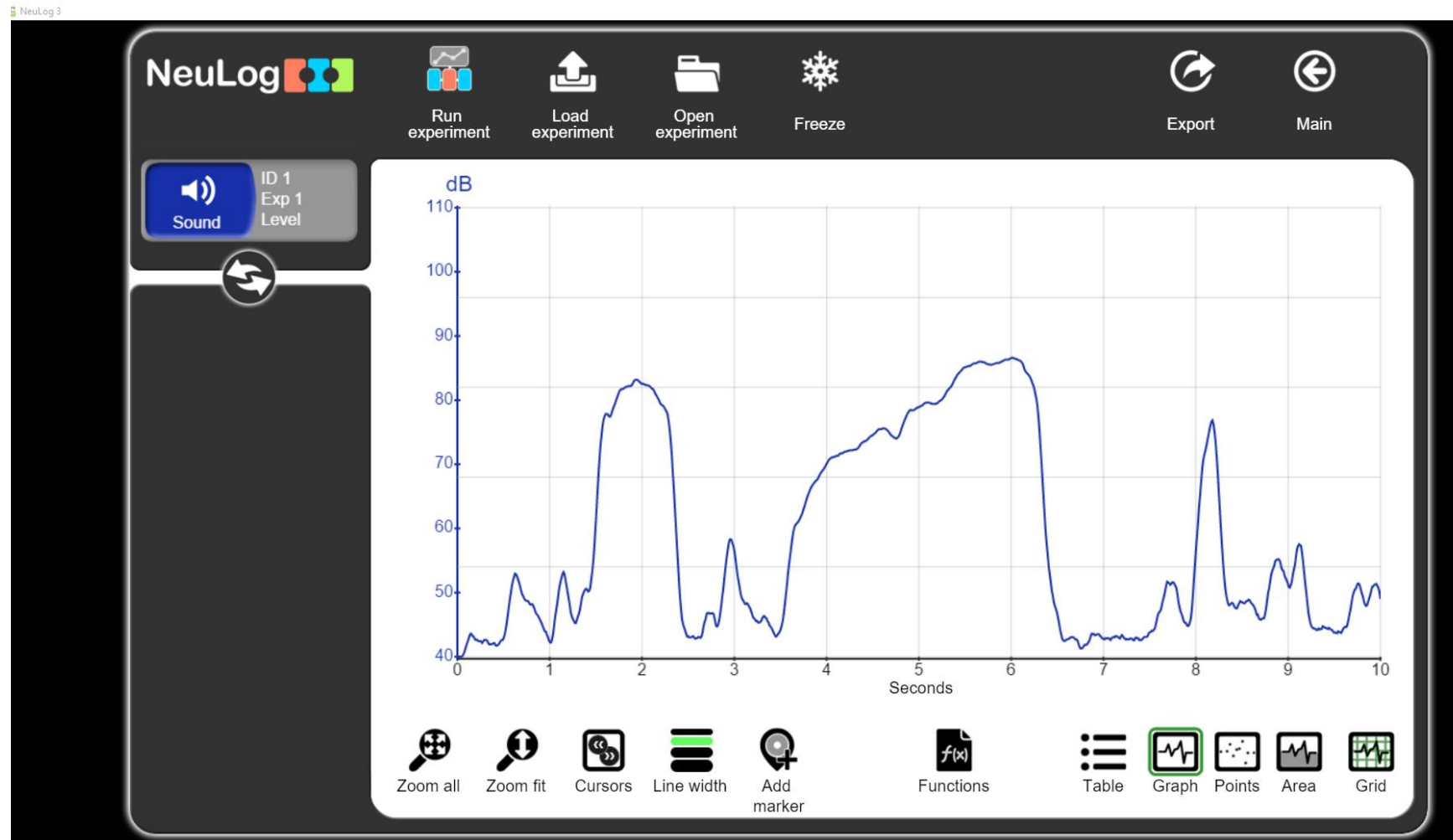
Clicked on open experiment.....



Selected Sound Test file...



Experiment opened showing graph I had recorded with sound sensor.



From here you can use the data any way you need, changing the views, and if you choose, freeze it and run more experiments to compare data.

