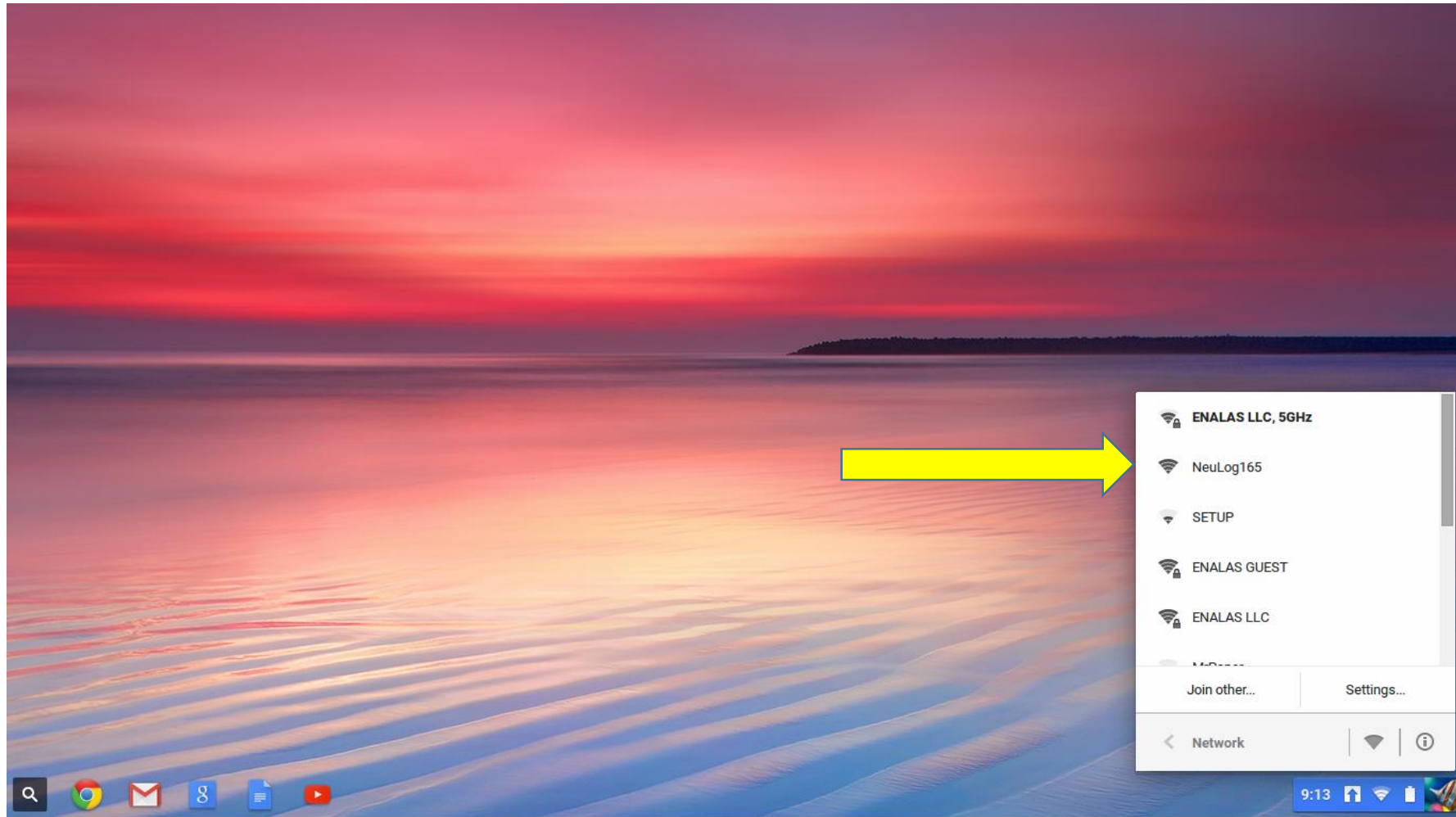


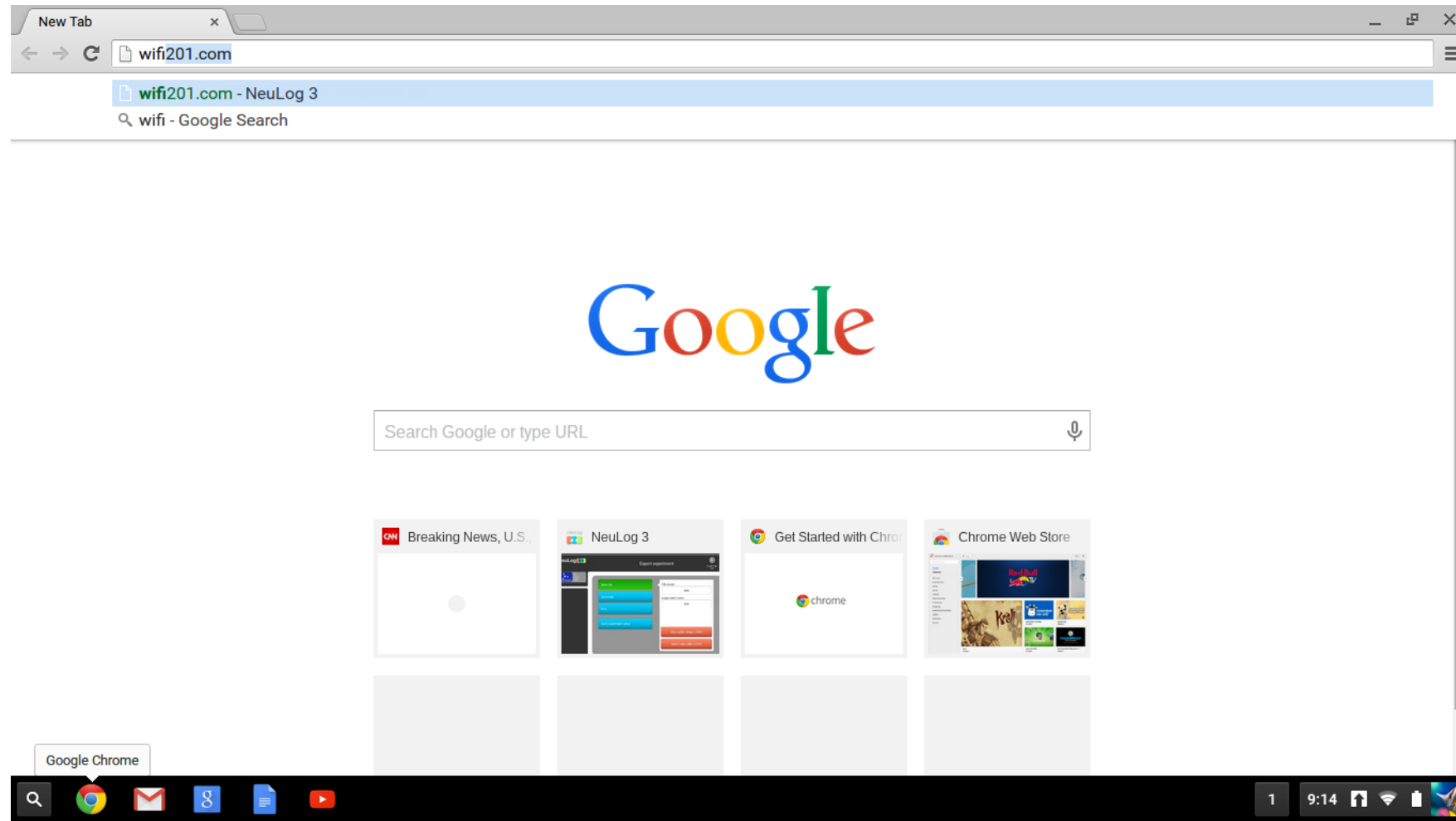
Connect your wifi module to a battery (or plug in the USB micro wire to a wall charger).
When the blue light stays on solid, you're ready to connect to the wifi hot spot.



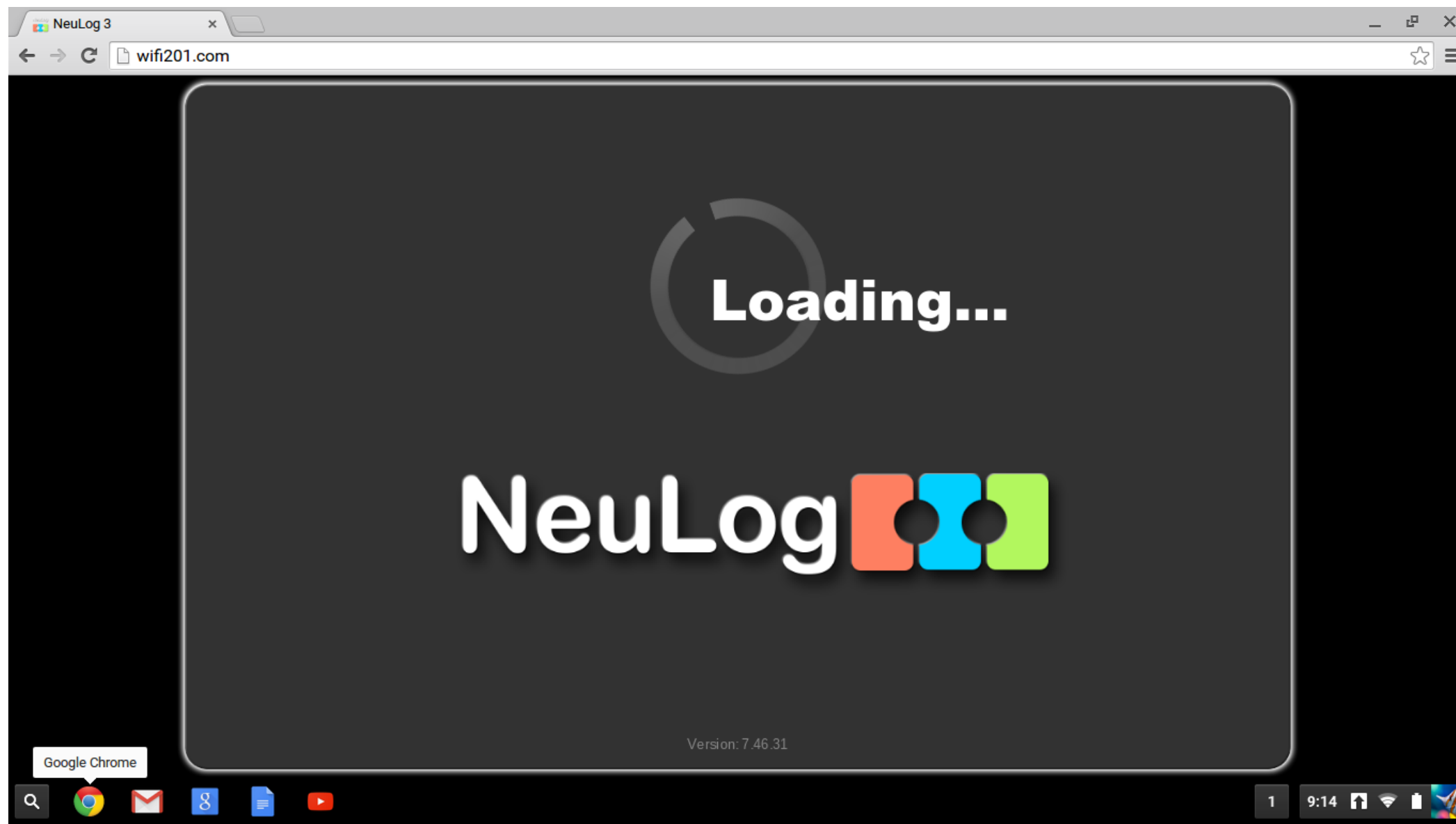
On your Chromebook, connect to the wifi hot spot that corresponds to the number on the Wifi module.



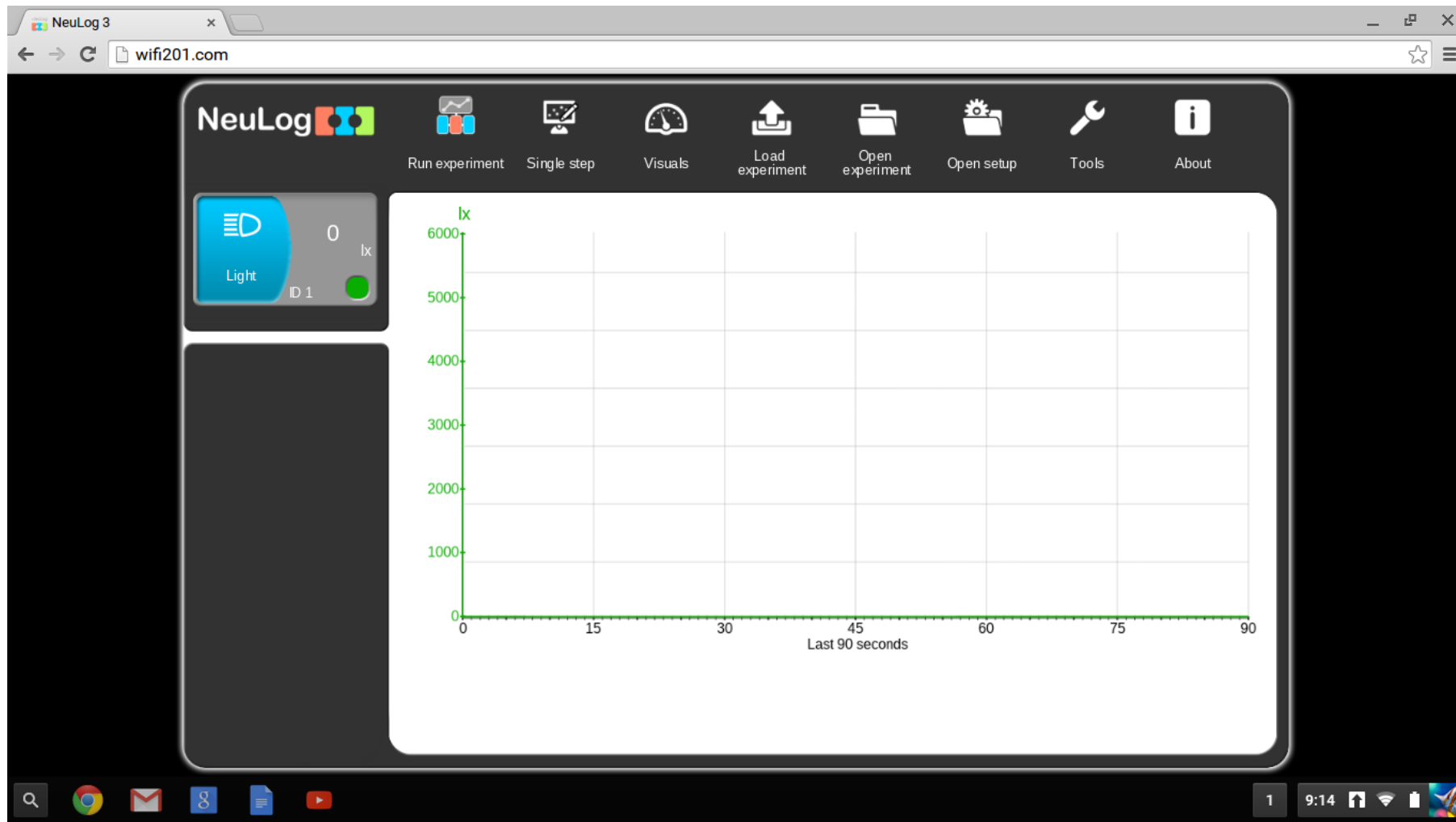
In the Chrome browser, enter wifi201.com, this will launch the NeuLog software



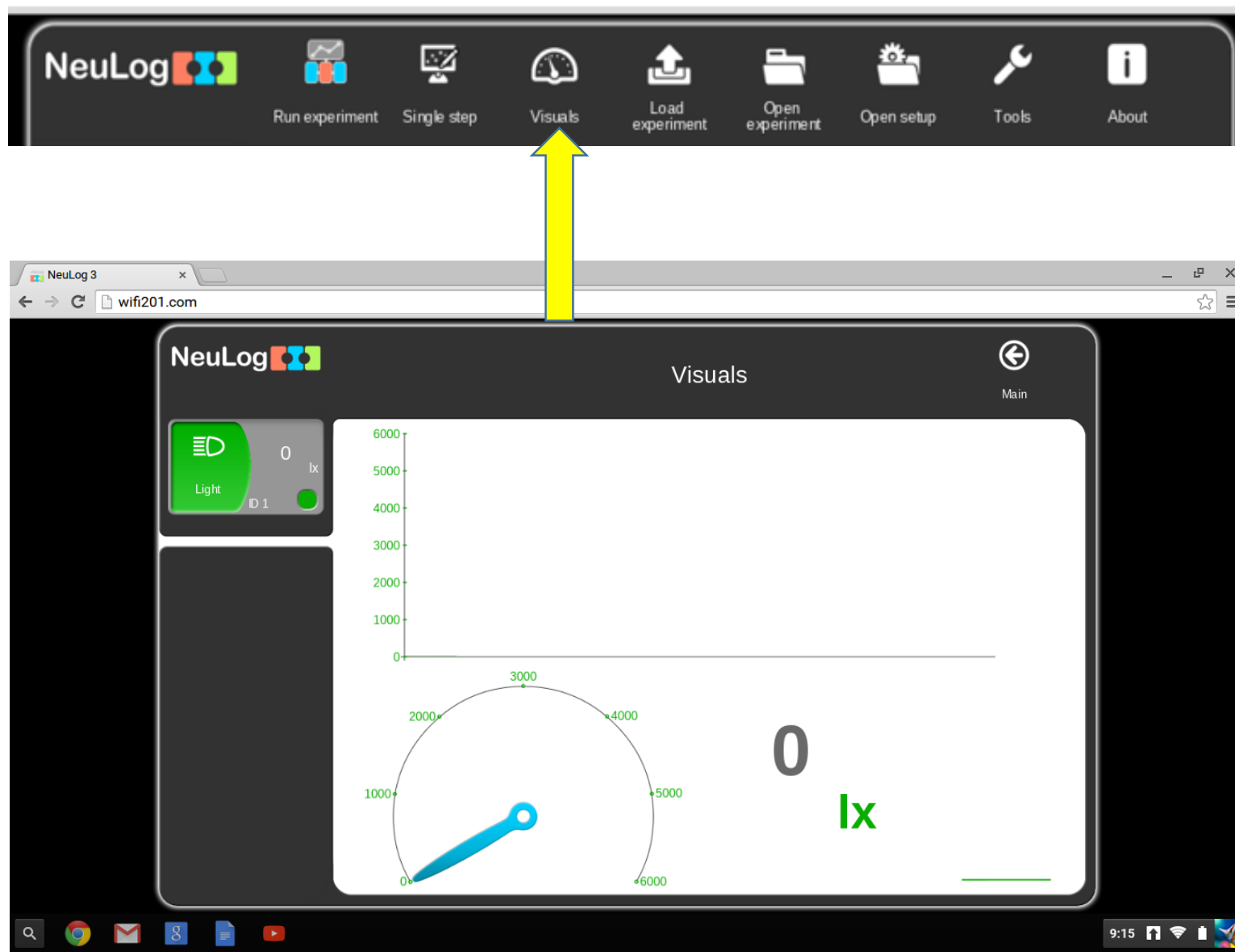
It takes a few seconds for the software to open....



Once the software is running, what ever sensor (sensors) that you have connected will start collecting data

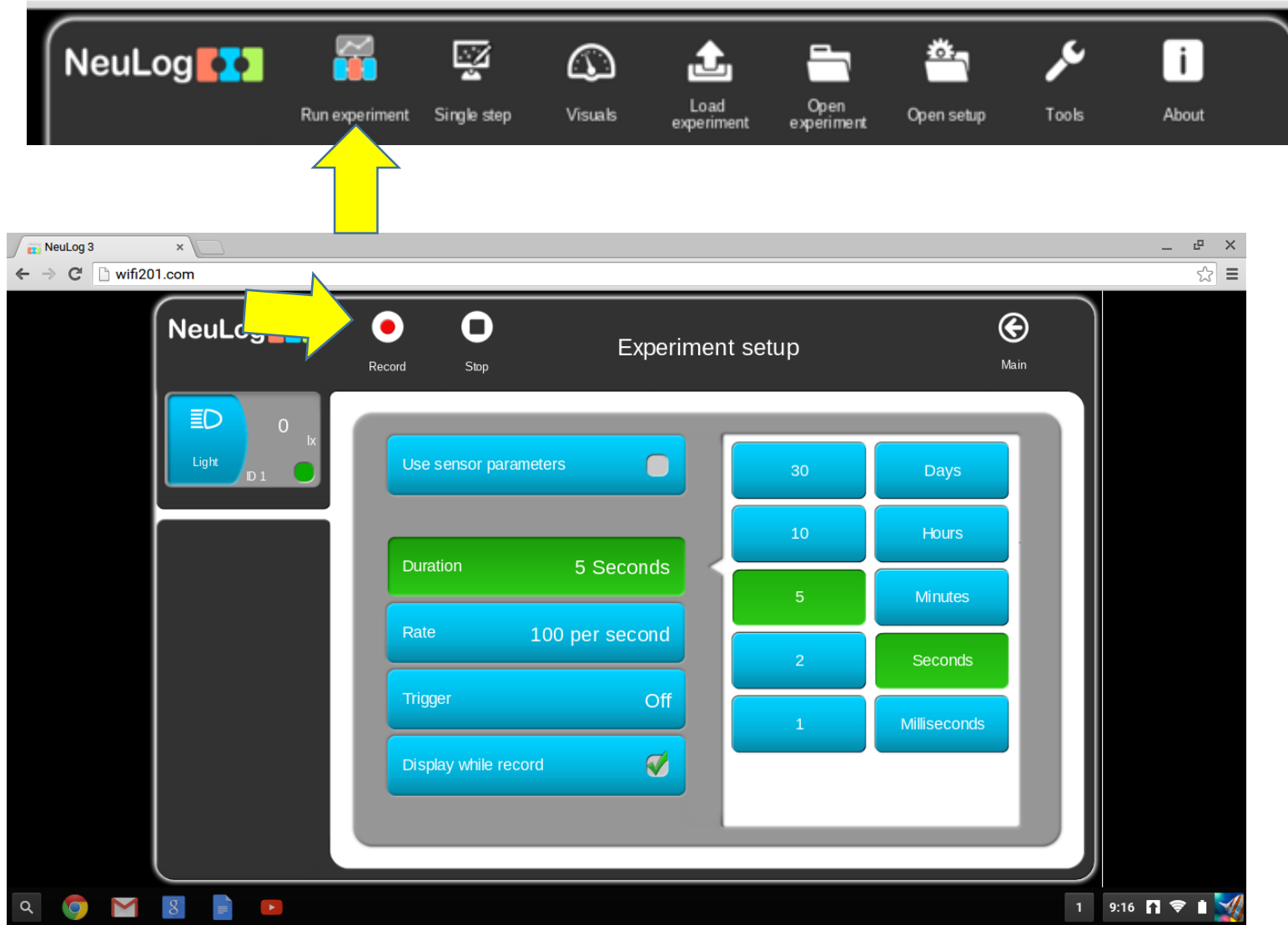


Clicking on the “Visuals” icon will open the Visuals mode. This shows the data in 4 different forms.

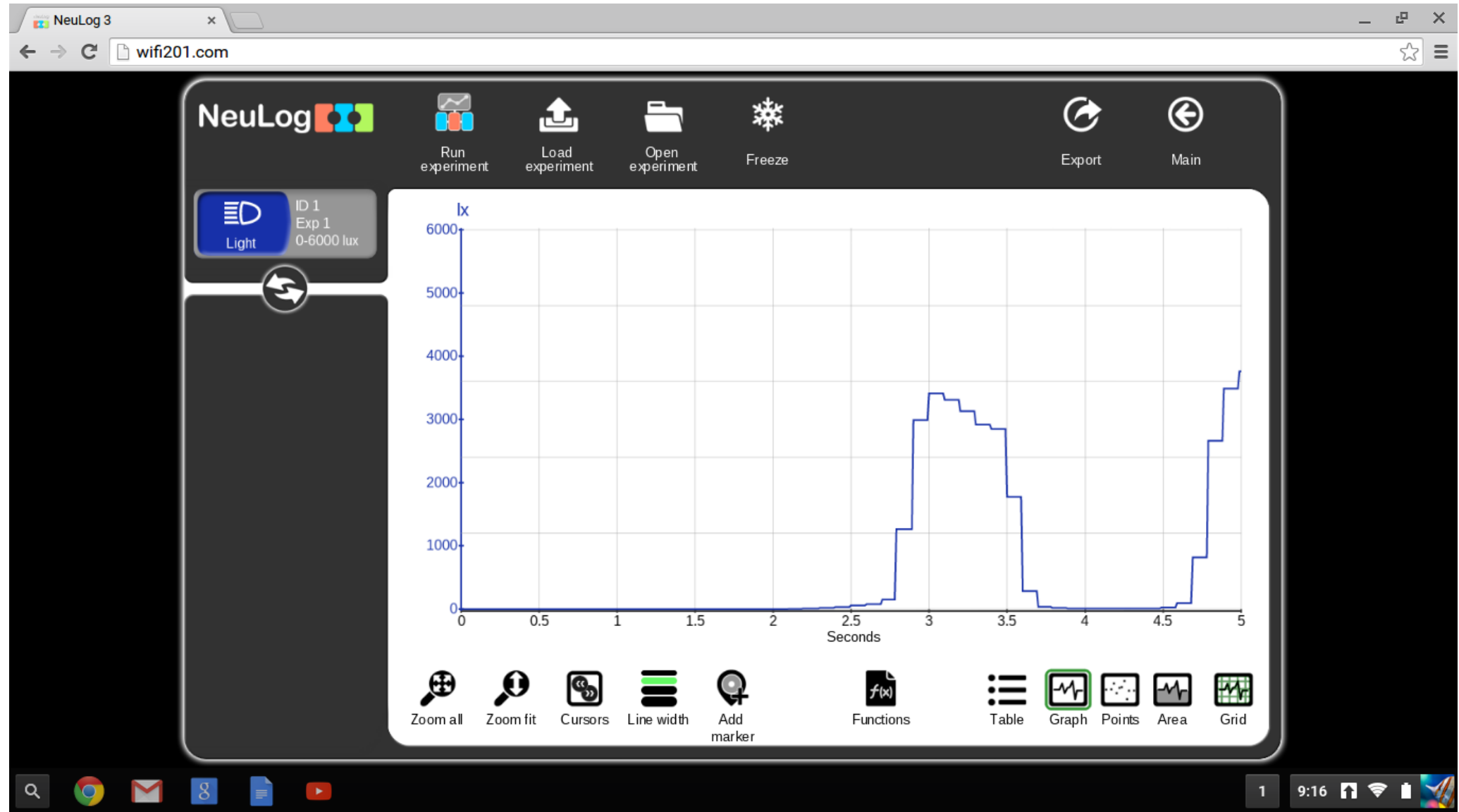


Clicking the “Run experiment” icon, will open the experiment set up screen.

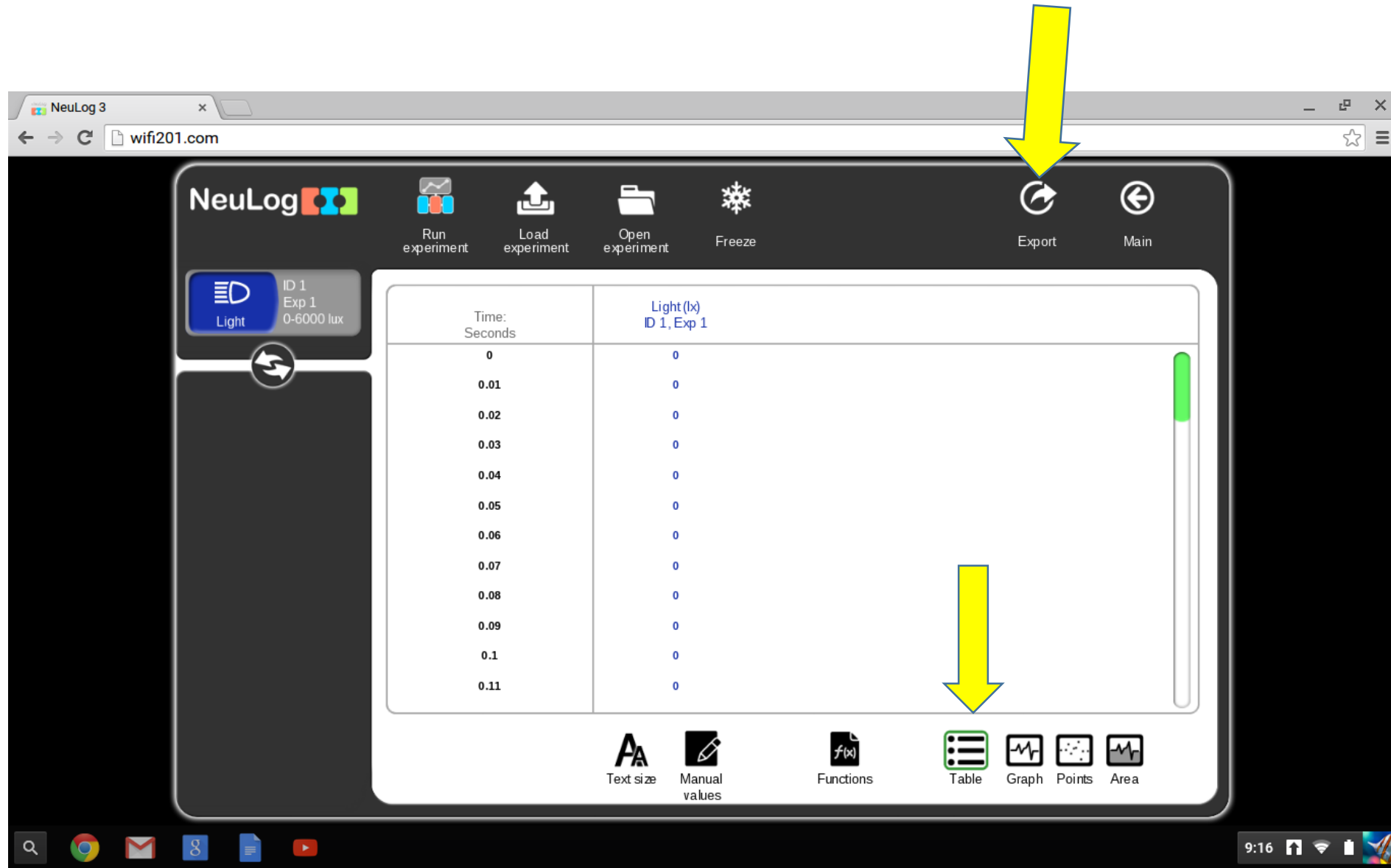
Here you can set the duration and sample rate. Clicking on “Record” will start the experiment.



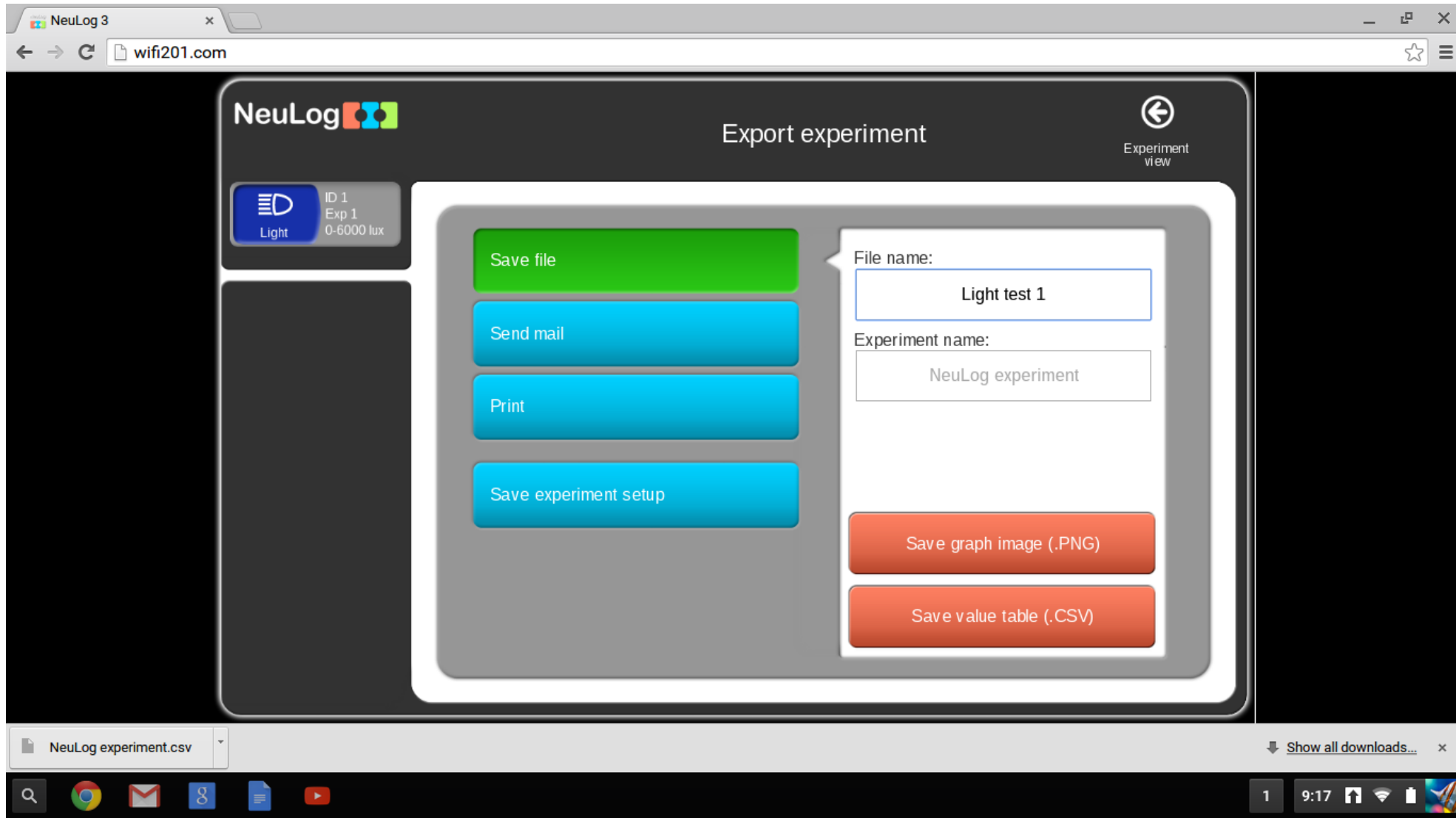
The experiment will run, collect and display the data in a graph.



Clicking “Table” will show the data collected numerically. Clicking the “Export” icon will allow you to save the graph as a PNG file or the data as a CSV file.



Here you can name and save the data file as a CSV or and image of the graph. Files will go into your down load folder. From here you can open them in google docs or send them with Gmail when you connect to the internet.



NeuLog 3

X Light test 1.csv

chrome-extension://bpmcpldpdmajfigpchkicefoigmkfalc/views/app.html

X

Light test 1.csv

File Edit Insert Format Help

Edits will not be automatically saved. [Save now](#)

Share

Calibri 12 B I U A

fx Experiment name:

	A	B	C	D	E	F	G	H	I	J	K	L	M	N	O	P	Q	R	S	T	U	V	W	X	Y
1	Experim	NeuLog experiment																							
2	Duration	5 Seconds																							
3	Rate:	100 per second																							
4	Sensors	Light (ID 1 Exp 1)																							
5	Range:	0-6000 lux																							
6	Units:	lx																							
7	Time																								
8	'0:0:0.0	0																							
9	'0:0:0.0	0																							
10	'0:0:0.0	0																							
11	'0:0:0.0	0																							
12	'0:0:0.0	0																							
13	'0:0:0.0	0																							
14	'0:0:0.0	0																							
15	'0:0:0.0	0																							
16	'0:0:0.0	0																							
17	'0:0:0.0	0																							
18	'0:0:0.1	0																							
19	'0:0:0.1	0																							
20	'0:0:0.1	0																							
21	'0:0:0.1	0																							
22	'0:0:0.1	0																							
23	'0:0:0.1	0																							

Sheet1

Light test 1.csv

NeuLog experiment.csv

Show all downloads...