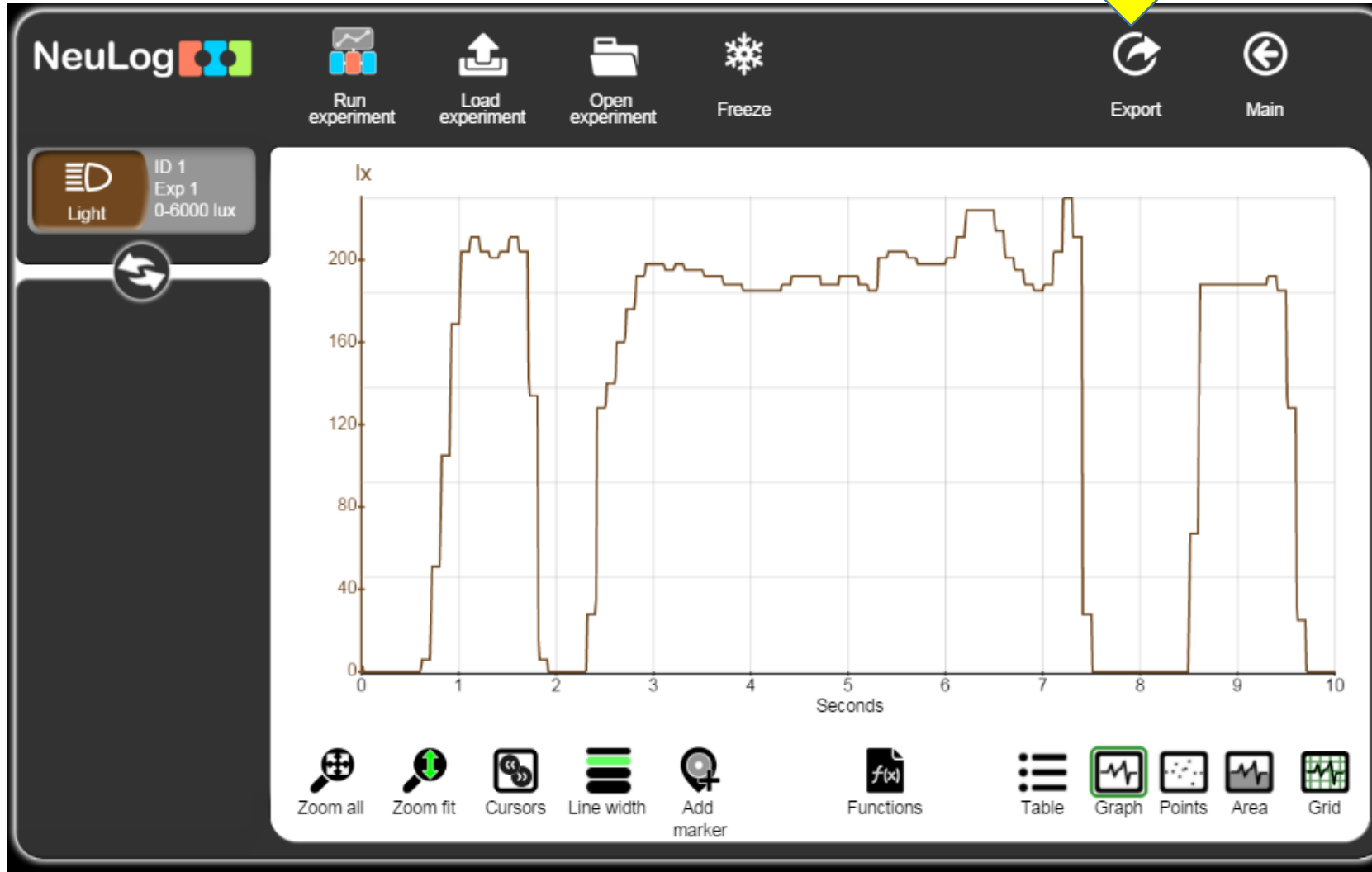
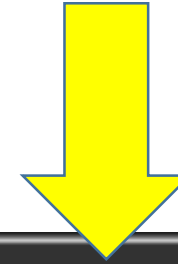
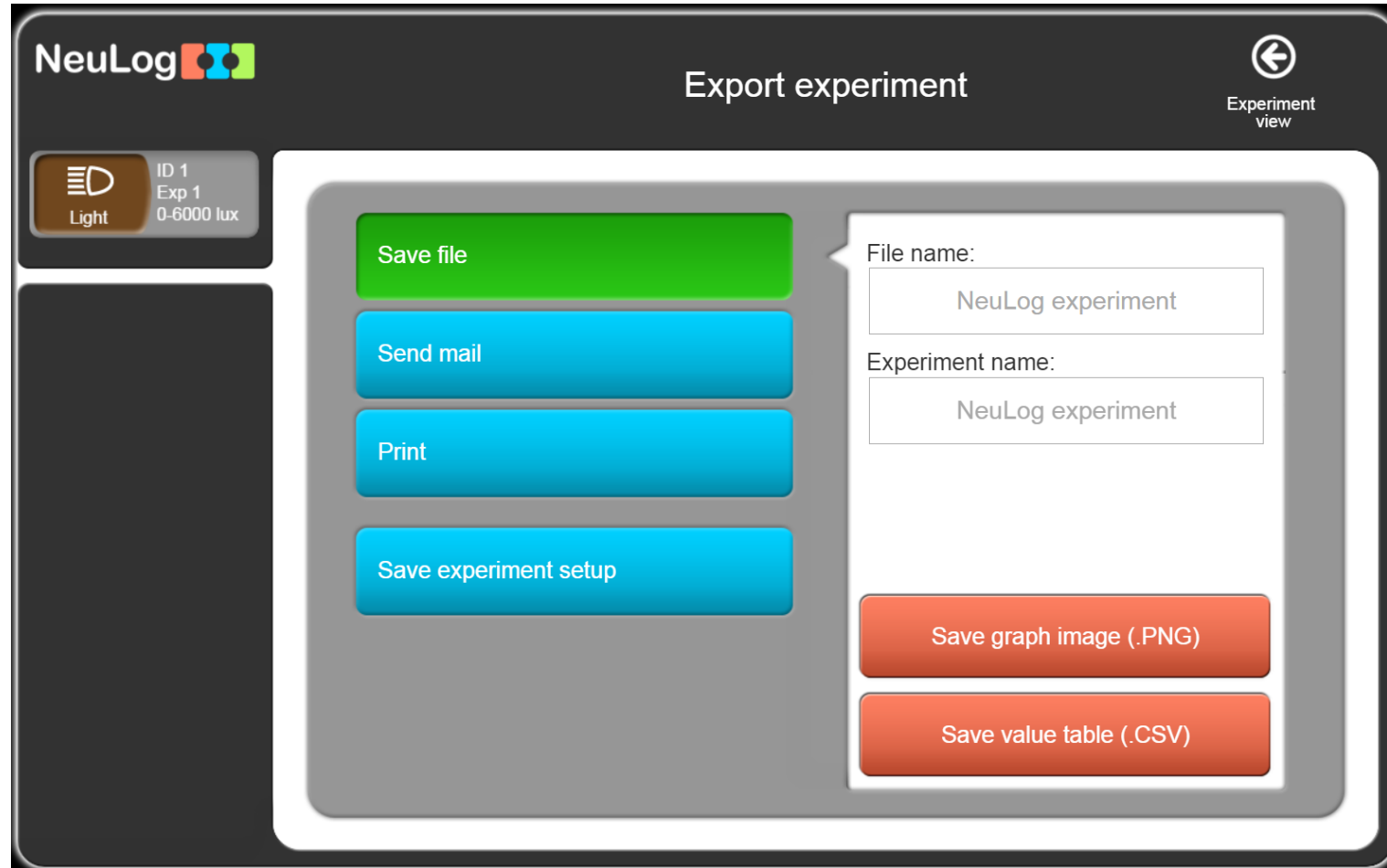


Run an experiment, then click on the Export icon.



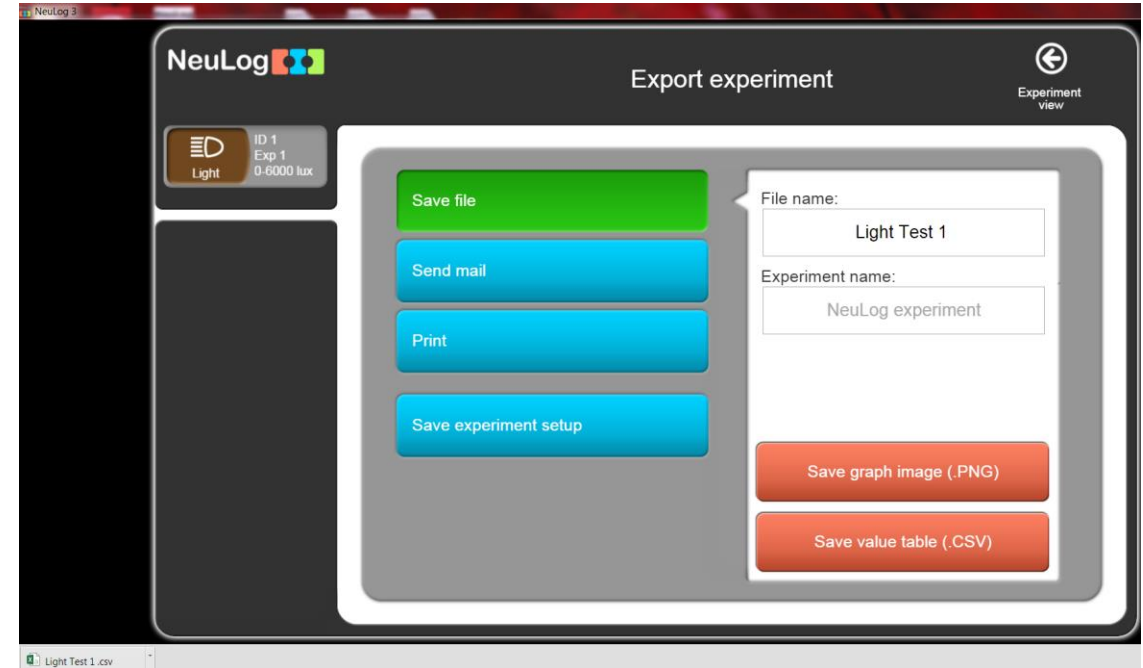
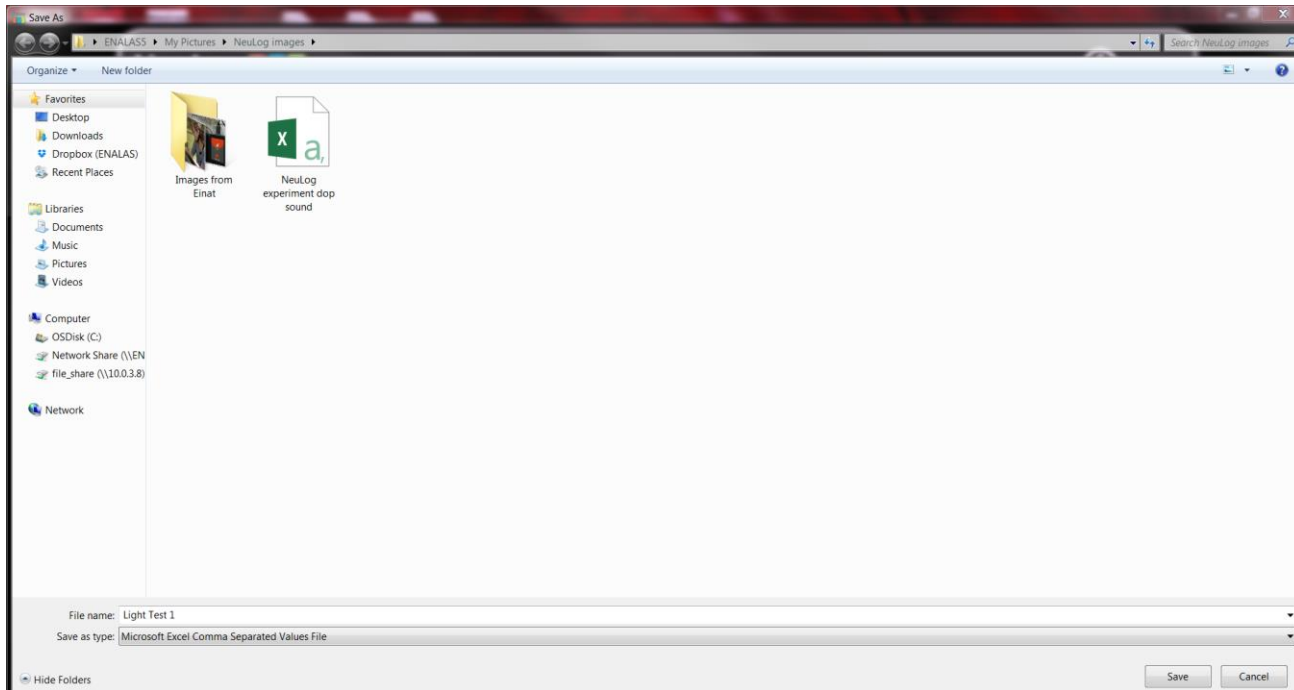
The Export screen will open, here you can save just the graph as a .PNG file or the data as a .CSV file



To save a CSV to use in Excel, name the file then click Save value table button

The screenshot displays the 'Export experiment' screen in the NeuLog application. In the top left, the NeuLog logo is visible. Below it, a sensor icon for 'Light' is shown with the following details: ID 1, Exp 1, and a range of 0-6000 lux. The main title of the screen is 'Export experiment', and there is a back arrow icon in the top right corner labeled 'Experiment view'. On the left side of the main content area, there are four buttons: 'Save file' (green), 'Send mail' (blue), 'Print' (blue), and 'Save experiment setup' (blue). A dialog box is open in the center-right, titled 'Export experiment'. It contains two input fields: 'File name:' with the text 'Light Test 1' and 'Experiment name:' with the text 'NeuLog experiment'. Below these fields are two red buttons: 'Save graph image (.PNG)' and 'Save value table (.CSV)'. Two yellow arrows are overlaid on the image: one points to the 'File name' input field, and the other points to the 'Save value table (.CSV)' button.

File will save to your downloads or other designated folder.



When you click save, file will show up as an Excel file, when you click on this, the Excel spread sheet will open, showing the data

Light Test 1 - Excel

FILE HOME INSERT PAGE LAYOUT FORMULAS DATA REVIEW VIEW

Paste Clipboard

Font: Calibri, 11, Bold, Italic, Underline, Color, Background Color

Alignment: Wrap Text, Merge & Center

Number: General, Currency, Percentage, Thousand Separator, Decimals

S16

	A	B	C	D	E	F	G	H	I	J
1	Experimen	NeuLog experiment								
2	Duration:	10 Seconds								
3	Rate:	100 per second								
4	Sensors:	Light (ID 1 Exp 1)								
5	Range:	0-6000 lux								
6	Units:	lx								
7	Time									
8	'0		3							
9	'0.01		3							
10	'0.02		0							
11	'0.03		0							
12	'0.04		0							
13	'0.05		0							
14	'0.06		0							
15	'0.07		0							
16	'0.08		0							
17	'0.09		0							
18	'0.1		0							
19	'0.11		0							
20	'0.12		0							
21	'0.13		0							
22	'0.14		0							

Light Test 1

READY